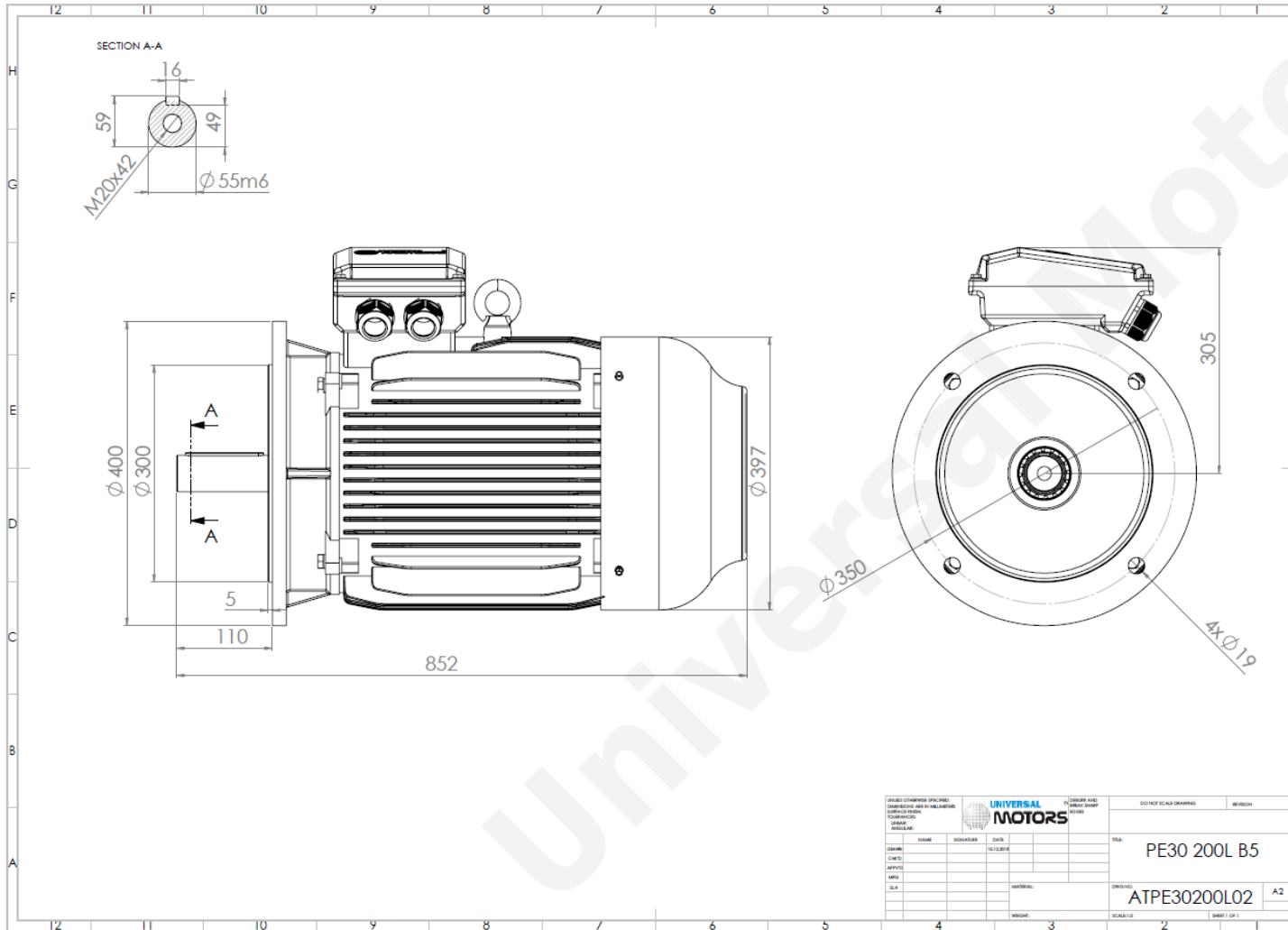




# TECHNICAL DATA

Three Phase Electric Motors - Cast Iron Frame  
 PE30 200 L 4 IE3  
 30 kW / 40 Cv  
 1480 RPM



Motor type:	<b>PE30 200 L 4 IE3</b>
Output:	<b>30 kW / 40 Cv</b>
Speed (min <sup>-1</sup> ):	<b>1480 RPM</b>
Frequency:	<b>50 Hz</b>
Voltage:	<b>400 V</b>
Current:	<b>53.8 A</b>
Power factor (Cos Ø):	<b>0.86</b>
Poles:	<b>4</b>
Insulation class:	<b>F</b>
Temperature rise Class:	<b>B</b>
Efficiency 50%:	<b>92.4 %</b>
Efficiency 75%:	<b>93.4 %</b>
Efficiency 100%:	<b>93.6 %</b>
Torque:	<b>194 N.m</b>
Tstarting/Tnominal:	<b>2.0</b>
Istarting/Inominal:	<b>7.8</b>
Tmaximum/Tnominal:	<b>2.3</b>
Noise:	<b>65 Db(A)</b>
Weight:	<b>278 Kg</b>
Bearing DE:	<b>6312 C3</b>
Bearing NDE:	<b>6312 C3</b>

UNIVERSAL MOTORS		DO NOT SCALE DRAWING		REVISION
DESIGN	NAME	DATE	SCALE	NO.
CHIEF	DESIGNER	DATE	SCALE	NO.
APPROV	DATE	MATERIAL	SCALE	A2
SLA	DATE	MATERIAL	SCALE	A2
DESIGN	NAME	DATE	SCALE	NO.
CHIEF	DESIGNER	DATE	SCALE	NO.
APPROV	DATE	MATERIAL	SCALE	A2
SLA	DATE	MATERIAL	SCALE	A2
DESIGN	NAME	DATE	SCALE	NO.
CHIEF	DESIGNER	DATE	SCALE	NO.
APPROV	DATE	MATERIAL	SCALE	A2
SLA	DATE	MATERIAL	SCALE	A2

Regime - S1

Altitude - 1000m

Environment Temperature - 40°C

## CONTACTS:

UNIVERSAL MOTORS Tel: +351 252 299 080  
 Rua de São Brás,745 Fax: +351 252 299 089  
 4480-782 VILA DO CONDE Mail: [geral@universalmotors.pt](mailto:geral@universalmotors.pt)

\* References applied only in the UK